



## Commercial Products

### Hoover Cordless Commercial Units



#### Commercial Backpack Kit

**H-CH93600**

- Hoover Commercial 40V System
- Works with Hoover 40V Batteries: CH27280 40V 8Ah and CH27312 40V 12Ah & Hoover 40V Chargers: CH07150 Single-Bay & CH07250 Dual-Bay
- Limitless runtime with the use of multiple Hoover Commercial 40V batteries
- 25% Lighter Weight\*
- Ergonomic Harness The light weight & ergonomic design enables easy maneuverability with less fatigue to minimize downtime
- Comes with Attachments, 1 Battery & Charger & Extra Paper Bags



#### HVRPWR 40V Cordless Backpack

**H-CH93619**

- HVRPWR™40V System: Designed for more mobility, and to be used by more people on your staff.
- 25% Lighter Weight\*: Helps reduce fatigue over extended hours for quicker more efficient cleaning.
- Ergonomic Harness: Ideal combination of power and performance helps users clean more efficiently.
- Quick Pass Cleaning: Ideal combination of power and performance helps users clean more efficiently
- Works with HVRPWR™40V 6Ah Battery (CH27260) and HVRPWR™ 40V Fast Charger (CH07150).
- Battery and Charger sold separately.



#### HVRPWR 40V Cordless Blower

**H-CH97019**

- HVRPWR™40V System: Designed for more mobility, and to be used by more people on your staff.
- High Power Performance: Delivers Cleaning Speeds Up to 100 MPH and 270 CFM.
- Maneuverable & Ergonomic: Soft grip handle for comfort and control.
- Variable Speed Trigger: Adjustable power in the palm of your hand to clean more efficiently with maximum control.
- Works with HVRPWR™40V 6Ah Battery (CH27260) and HVRPWR™ 40V Fast Charger (CH07150).
- Battery and Charger sold separately.

\*On low with 6Ah 20V battery. \*\*See HooverCommercial.com for a list of compatible chemicals.

# Cordless Accessories



## HVRPWR 40V 8AH Battery

**H-CH27280**

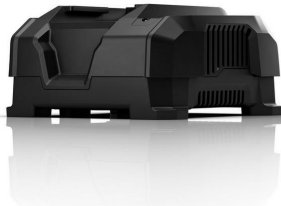
- Battery provides up to 71 Mins (Hush), 46 Mins (Boost) on Uprights, 63 Mins (Hush) 35 Mins (Boost) on Backpacks. Weighs 4.5 lbs.
- Works with HVRPWR™ 40V Cordless Upright (CH95519), HVRPWR™ 40V Cordless Backpack (CH93619), HVRPWR™ 40V Cordless Blower (CH97019) and HVRPWR™ 40V Charger (CH07150). Backwards compatible with the MPWR 40v Cordless System.
- Charger sold separately.



## 40V 12AH Battery

**H-CH27312**

- Battery provides up to 120 minutes of continuous run time, and batteries fully charge in as little as 120 minutes. Weighs 6 lbs.
- Works with Hoover 40V Cordless Upright (CH95519), Cordless Backpack (CH93619), 40V Cordless Blower (CH97019) and 40V Dual Bay Charger (CH07250) & Single Bay Charger (CH07150).



## HVRPWR 40V Fast Charger

**H-CH07150**

- Charges one 40V battery
- Hi/Low Temperature monitoring prevents overheating.
- Auto Charging and discharging termination.
- Sleep Mode helps to regulate temperature.
- Charging Control when optimal temperature is reached.
- Surge Protection helps prevent damage to the battery cells.
- Maximum Charge Time regulator protects the battery.
- Works with HVRPWR™ 40V Cordless Upright (CH95519), HVRPWR™ 40V Cordless Backpack (CH93619), HVRPWR™ 40V Cordless Blower (CH97019) and HVRPWR™ 40V 6Ah Battery (CH27260).
- Battery sold separately.



## 40V Dual Bay Charger

**H-CH07250**

- Charges two 40V battery simultaneously.
- Hi/Low Temperature monitoring prevents overheating.
- Auto Charging and discharging termination.
- Sleep Mode helps to regulate temperature.
- Charging Control when optimal temperature is reached.
- Surge Protection helps prevent damage to the battery cells.
- Maximum Charge Time regulator protects the battery.
- Works with HVRPWR™ 40V Cordless Upright (CH95519), HVRPWR™ 40V Cordless Backpack (CH93619), HVRPWR™ 40V Cordless Blower (CH97019) and HVRPWR™ 40V 6Ah Battery (CH27260).
- Battery sold separately.

# Corded Hoover Commercial Uprights



## Commercial Superior Light Upright

**H-CH50200**

- Lightweight at just about 9lbs.
- Saniseal® Bags Saniseal bags automatically seal before they are removed.
- Endurallife Belt lasts longer with advanced circuitry that shuts off the motor to avoid belt breakage.
- Multi-Floor Cleaning can be used on all floor types
- Pigtail Cord The 40-foot power cord is connected to the pigtail cord using a cord clamp
- Wall Bumpers are clear and non-marring.
- Carrying Handle makes transportation from room to room & up stairways easier & faster.
- Side Edge Brushes
- Deep Cleaning Rollerbrush with speeds of 5,000 to 6,500 RPMS, the high-speed roller brush deep cleans carpet.



## Commercial Prime Lite Upright

**H-CH50300**

- Lightweight Efficiency only 9 lbs.
- Cleaning Freedom with 35ft of cord use you have plenty of room to move around.
- Saniseal® Bags the Saniseal bags automatically seal before they are removed.
- Low Profile Design the vacuum is able to lay flat so you can really get under furniture such as tables, chairs, couches, or anything else you may need.
- Helping Hand Handle
- Top-Fill Inner Bag Don't worry about losing suction as the bag fills.
- Wall Bumpers clear, non-marring wall bumpers protect and minimize damage on furniture, walls, and baseboards.
- Side Edge Brushes to clean corners or baseboards with outside edge brushes.



## Commercial TaskVac Bagless

**H-CH53010**

- Minimize downtime with the Hoover Commercial Lightweight TaskVac Bagless uprights featuring tool-free maintenance.
- HEPA Media Filter that traps 99.97% of dirt, dust and pollens down to 0.3 microns.
- Drastically reduce maintenance costs with zero bags.
- Easy Access Brushroll & Belt System.
- Powerful onboard hose and tools.
- Long-Lasting Belt - A long term clean that saves time & money.
- Maintenance-Required Indicator Light.
- Extra-Long Stretch Hose with Cleaning Accessory Pack.
- Belt View Window.
- HEPA Filter # 440013493
- Primary Filter # 303173002
- Longer Life Belt # AH20080

# Corded Hoover Commercial Uprights



## Commercial TaskVac 2 Bagged Upright

**H-CH54100**

- Easy Change Brushroll & Belt
- Lightweight Low-Profile Design weighs 15 lbs
- Clean Drop HEPA Bags remove easily with a push of a button
- 35 ft High-Visibility Cord
- 14" Cleaning Path
- 8 ft Cleaning Hose
- Fingertip Controls
- 1 Year Commercial Warranty



## Commercial HushTone 13" Upright

**H-CH54113**

- The HUSHTONE™ 2 Speed Motor: Causes less disruption with 69 dB sound when you want it and more performance when you need it.
- Standard 13" Nozzle.
- Tool-Free Assembly/ Maintenance
- IntelliBelt™ Permanent Belt.
- Sealed Allergen System with HEPA & Hexaguard™ Technology.
- 3-Wire Quick Change Cord.
- IntelliBelt™ Permanent Belt.
- Powerful onboard hose and tools.
- Standard Bag 10 pack # AH10143
- Allergen Bag 10 pack # AH10243
- HEPA Exhaust Filter # 440007773
- Inlet Filter # 440007774



## Commercial HushTone 15" Upright

**H-CH54115**

- The HUSHTONE™ 2 Speed Motor: causes less disruption with 69 dB sound when you want it and more performance when you need it.
- Wide 15" Nozzle.
- Tool-Free Assembly/ Maintenance
- IntelliBelt™ Permanent Belt.
- Sealed Allergen System with HEPA & Hexaguard™ Technology.
- 3-Wire Quick Change Cord.
- IntelliBelt™ Permanent Belt.
- Powerful onboard hose and tools.
- Standard Bag 10 pack # AH10143
- Allergen Bag 10 pack # AH10243
- HEPA Exhaust Filter # 440007773
- Inlet Filter # 440007774

# Hoover Speciality Units



## Commercial HushTone 6 qt Backpack

### H-CH34006

- The HUSHTONE™ 2 Speed Motor causes less disruption with 62/64 dB sound and top performance.
- HEPA Filtration with Hexaguard™ Technology.
- Tool-Free Assembly/Maintenance.
- Extra Long 50' 3-Wire Quick Change Cord.
- Lightweight Design.
- Chiropractor Designed Harness: reduce user strain; increase vacuum portability.
- Standard Filtration 10 pack bags # AH10173
- Allergen Filtration 10 pack bags # AH10273
- HEPA Filter 2 pack # AH40006
- Inlet Filter # 440009175
- Hexagaurd Active Carbon Filter # 440009176



## Commercial Shoulder Vac 1½" Backpack

### H-C2401

- Designed for superior mobility, easily clean larger spaces with the lightweight ShoulderVac Pro Bagless Backpack.
- Hypercone Filter Made with HEPA Media.
- Quiet Operation
- Extra Long 48' 3-Wire Quick Change Cord.
- Lightweight Design 11.6 LBS.
- Chiropractor Designed Harness: reduce user strain; increase vacuum portability.
- Standard Bags Type BP 7 pack #401000BP
- HEPA Filter # 2KE2110000



## Commercial PortaPower Pro

### H-CH3000

- Easily clean above-floor and in-between for detailed cleaning.
- Lightweight - Increase maneuverability with less fatigue.
- Extra Wide Cleaning Path - Cover more area with fewer passes.
- Stretch Hose - Easily clean ceilings and hard to reach areas.
- Cleaning Accessory Pack - Easily accessible equipment for detailed cleaning.
- Built-In Blower - Easy dissemination of debris.
- Convenient On/Off Switch - Less user strain.
- Cloth Bag Assembly # 43662023
- Paper Bag Adaptor Kit # 4010050N
- Standard Bags Type N # 4010038N

# Hoover Speciality Units



## Commercial Powerscrub Spot Cleaner

**H-CH68000**

- Dual Tank System - keeps clean and dirty water separate
- SpinScrub Brushes - Five spin scrub brushes for supreme clean
- Heat Force Drying - Lifts and removes residual water from carpet fibers
- Easy Clean Removable Nozzle & Water Tank - makes it easy to clean
- Warranty - one-year commercial warranty
- Cleaning Path: 12 in
- Motor: 10 Amps
- Handle Material: Molded Plastic
- Weight 24.4 lb



## Commercial Orbital Floor Cleaner

**H-CH80100**

- Multi-Purpose Cleaning - The Floor Cleaner is effective on all types of commercial flooring surfaces allowing you to sand, refinish, strip, scrub, wax, and polish, as well as deep clean your carpets.
- 50 ft of Cord Length - You don't have to worry about unplugging and replugging as you move from one area to the next.
- Easy to Maneuver - The brush head moves in a random orbit pattern allowing the machine to easily glide over the floor, and prevents brush marks, swirls, sanding marks, and gouges.
- Reduces Allergens - Clean your carpets while reducing allergens, without leaving behind residue.
- Gets into Tight Spaces - With a 13in cleaning path easily move around furniture, under furniture, clothing racks, chairs, desks, and to every corner of the room.
- Drive Pad Holder Included - The drive pad holder is designed to securely hold a variety of scrubbing pads in place with its plastic teeth.

